

A workshop with various tools and equipment hanging on a wooden wall. The tools include a chainsaw, a power drill, and other hand tools. The wall is made of light-colored wood. The tools are mounted on a metal rack system. The lighting is warm and focused on the tools.

Quality
Wood & Metal
designsTM

**Expert Knowledge.
Experienced Craftsmanship.**

COMMERCIAL AND RESIDENTIAL

Eliminate mishandling or damaging of firearms at your shop or at home.

[SHOP OUR PRODUCTS](#)



QUALITY WOOD & METAL DESIGNS

We stand as a family-owned company with a commitment to Midwestern ethics, creative innovation, and exceptional service. We specialize in crafting quality, custom-made wood and metal products for a variety of industries. Embodying the values of hard work, dependability, and a deep investment in customer relationships.

WHAT WE DO

Quality Wood & Metal Designs is dedicated to providing smart, effective, and innovative solutions for commercial and residential use.

WHAT YOU CAN COUNT ON

At Quality Wood & Metal Designs, we specialize in delivering high-quality custom wood and metal solutions tailored for retail and residential needs. Our commitment to innovative design and outstanding service ensures we exceed expectations, delivering timely and budget-friendly solutions every time.

→ **MIDWESTERN VALUES**

→ **MADE IN THE USA**



Protecting your firearms, elevating customer experience

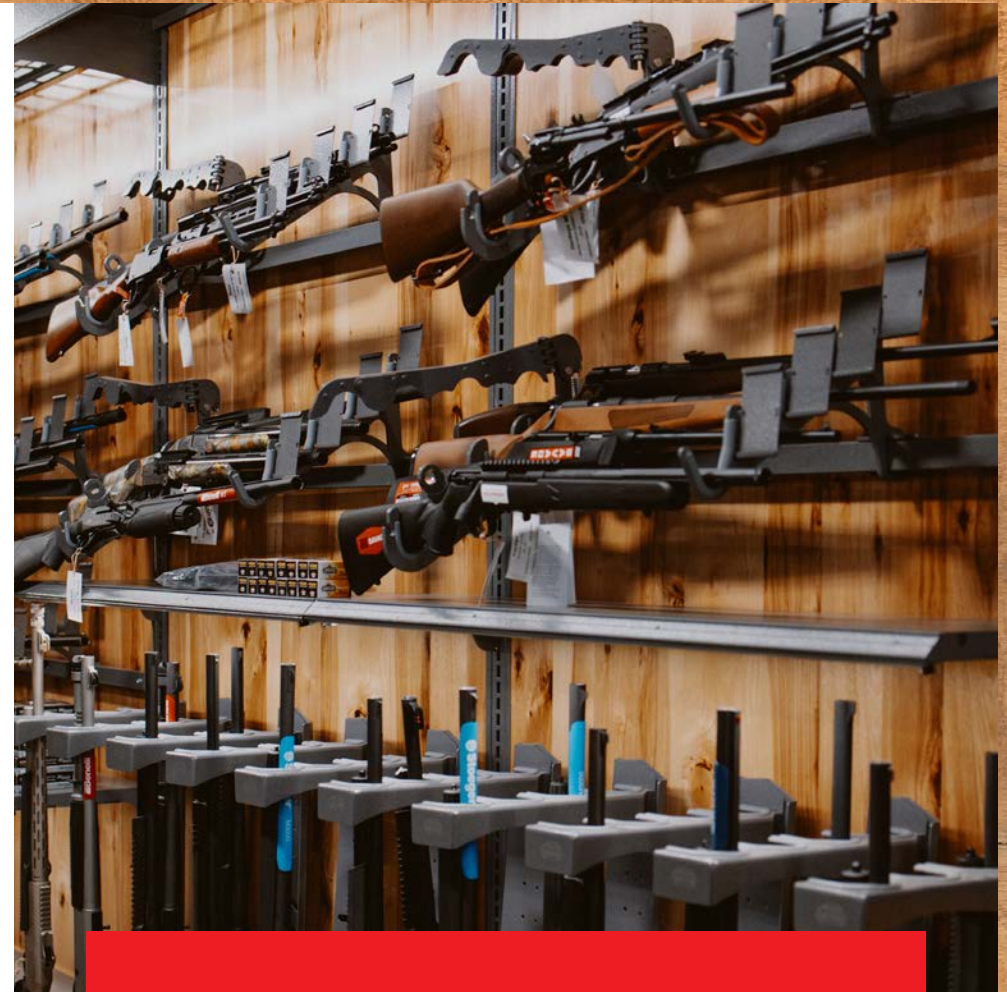
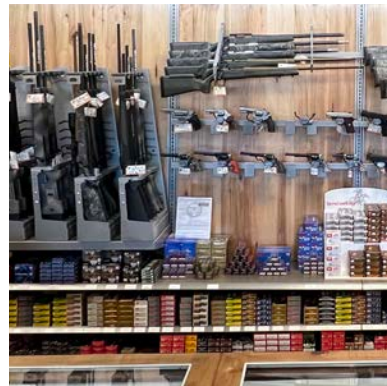
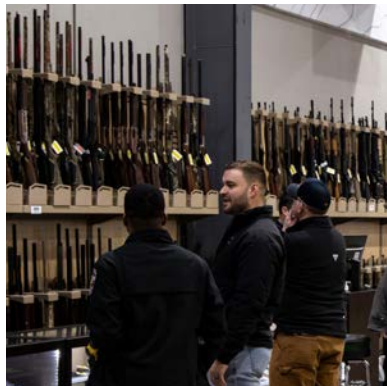
Gun Warden® leads the industry with anti-theft display systems designed for businesses big and small. Our proven products are professional, secure, and ensure the protection of your inventory while enhancing the customer experience.



**SECURES YOUR
INVENTORY DAY
OR NIGHT**



**SAFE CUSTOMER
EXPERIENCE**



Gun Warden is dedicated to providing cost-effective and innovative solutions for securing firearms in commercial spaces. We believe in professional and secure display systems that not only protect against theft but also create engaging and safe environments for customers to interact with firearms.

**CONTACT OUR TEAM TO DESIGN YOUR
LAYOUT FOR MAXIMUM SPACE EFFICIENCY**



Elevate your home firearm storage, safety meets sophistication

Home Guardian, the residential line of Gun Warden, extends our commitment to innovation and security in your home.

Offering an innovative and secure way to display firearms, Home Guardian eliminates mishandling or damaging your valuable firearm collection.



**PROVIDES
PEACE OF MIND**



**ELIMINATE
MISHANDLING**



Home Guardian is committed to revolutionizing home firearm displays with innovative and secure solutions. Our residential product offers not just a safe display but also ensures the protection and pristine condition of your firearms. We aim to provide peace of mind for firearm enthusiasts, making home firearm storage a sophisticated and secure experience.

**AN INNOVATIVE RESIDENTIAL PRODUCT
THAT PROVIDES A SAFE AND SECURE WAY
TO DISPLAY FIREARMS AT HOME.**

Residential Products



RESIDENTIAL LOCKER

Choose between our 5-gun and 10-gun capacity options. You get adjustable buttstock rests, adjustable barrel rest and our patented Gun Warden Jaw that secures your firearm in the fixture. Allowing you to show off your collection while preventing accidents.

Pair with the other components for the ultimate gun display!

RESIDENTIAL PISTOL WARDEN



As a stand-alone or paired with the Long Gun Lock and Strong Box. You can choose between the 2ft for 3-guns or 4ft model for 6-gun.

Pair with the other components for the ultimate gun display!

RESIDENTIAL STRONG BOX



A perfect compliment to the Lock Gun Locker or Pistol Warden is the Strong Box. This holds all of your gear and is a great workspace for getting ready for the range or a quick cleaning.

Pair with the other components for the ultimate gun display!

LONG GUN DISPLAYS

Maximize firearm display efficiency: clear pricing, easy reading

We created the Gun Warden for businesses to better merchandise and display their products, with a design that is focused on the safety and security of all those involved.

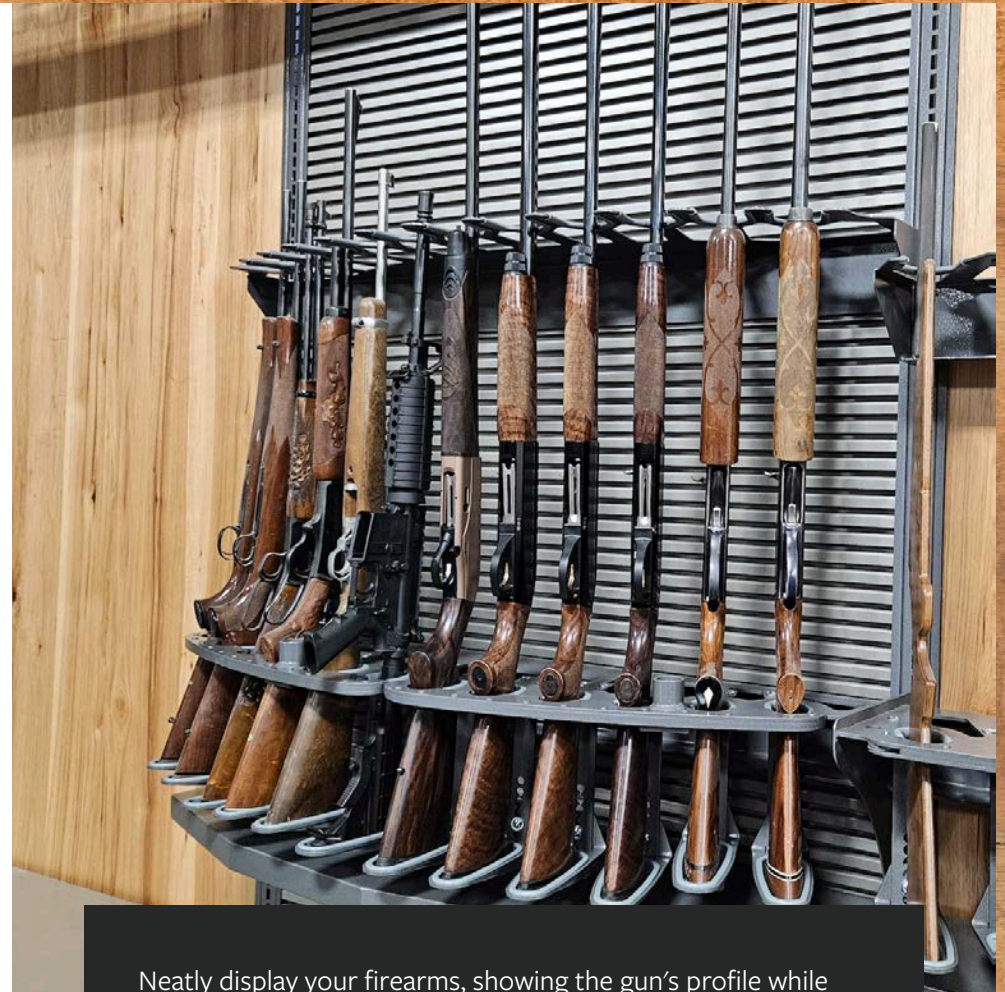
Displays 8, 10, or 12 Long Guns while featuring new adjustable butt and barrel rests.



**SAFELY DISPLAY,
MERCHANTISE,
& PROTECT**



**DISPLAY 8, 10, OR 12
LONG GUNS AT ONCE**



Neatly display your firearms, showing the gun's profile while packing more inventory in the same linear footage. Adding the clip-into-place tag holders allows pricing and information to be easily read, even when the firearm is locked in a glass case.

**GUN WARDEN SYSTEMS ARE THE BEST WAY
TO SECURELY DISPLAY, MERCHANTISE,
AND PROTECT RIFLES.**

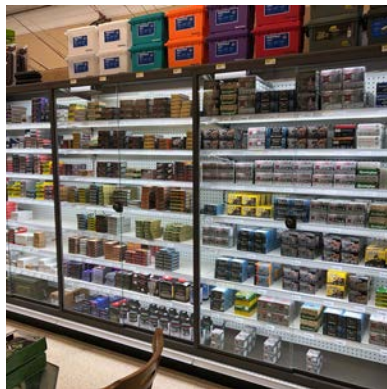
Products

MODULAR WALL & COMPONENTS



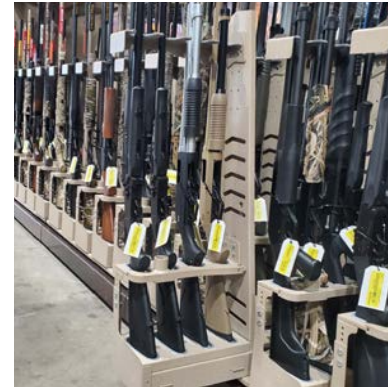
What would be better than outfitting your entire perimeter wall in merchandisable space? Our Modular Wall system is the base of our modular system allowing all Gun Warden products to mount interchangeably as well as shelving and pegs and slat wall accessories, allowing this system to grow with your business.

GLASS CASE SURROUND



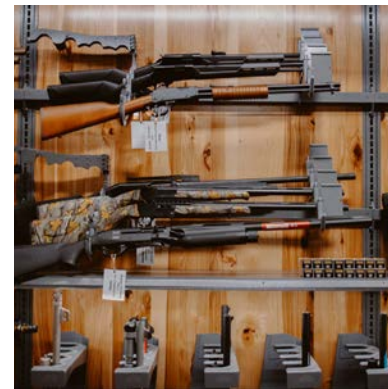
This is the most versatile locking case on the market! It allows for great sight lines to your products and can be used with shelving, pegs, or our Gun Warden 4-Gun Horizontal Locking Arms or our Pistol Wardens. With integrated lighting for the Gun Displays and additional Under-Shelf Lighting Kits available for the shelves, your products will be secure, highlighted, and visible to your customers.

VERTICAL LOCKING SLIDERS



This staple of the Gun Warden is hands down the highest volume per square foot product on the market allowing you to get up to 50 long guns in a 4ft wide by 22in deep footprint. The product slides out to pack in the inventory while allowing you to easily reach the gun in the back. Sleds are spaced to accommodate scopes and adjustable to fit any style of gun on each sled. Comes in both 4-Gun and 5-Gun capacities. Ask about our AR Cable Kits.

HORIZONTAL LOCKING ARMS



This display provides a waterfall effect for great visualization of each firearm as well as integrated sign holders for a neat and clean way to present pricing and features. The system adjusts both the jaw and barrel rest side to side to fit every gun, every time. When unlocked the jaw swings up and out of the way to protect your firearms from damage.

Products

PISTOL WARDEN & COMPONENTS



Feature a solid steel bar that runs through the trigger, making it impossible to break without damaging the firearm. Since our Gun Warden products are all designed with retailers in mind, we have made them easy to use and operate. Armature wire is used to hold the gun in place allowing you to lock and unlock the gun. The Pistol Warden also adjusts side-to-side allowing up to 5 guns to fit comfortably across the 4ft bar.

SHOWCASES



With 4ft and 5ft lengths, this counter height display can hold anything from handguns to optics to knives. All cases come with LED Lighting and 2 layers of tempered glass shelves in 10" and 12" depths. Overall case dimensions are 48" or 60" wide x 38" tall x 21" deep. Outfitted with interlocking steel bypassing doors and a fortified lock shroud, this fortress protects your most valuable products.

RETAIL PRODUCTS



We've worked with thousands of retail clients to develop several products that are tried and true such as our QWD Quality Slat Wall. It is the strongest and most solid retail gondola system on the market today. We don't just sell you pre-made gondolas or one-size-fits-all solutions; we work with you to efficiently display your unique products.

LIGHTING



Our Under-Shelf Lighting is a universal solution that allows your products to stand out among the rest.

Installation is easy. They attach to the underside of a shelf with the use of magnets or clips, so they work with every shelving unit.

Products

RETAIL FIXTURES

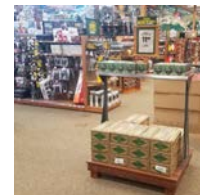


We customize and tweak these basic retail products to create a unique solution for your business. And when we say custom, we mean it.

When we agree to work with your retail store, we don't just sell you pre-made gondolas or one-size-fits-all solutions; we work with you to efficiently display your unique products. In the past, we've created

original designs such as fishing rod racks, sliding gun displays, and even a patented auto-feed shelf pusher for ammunition.

All of our retail gondolas and slat walls are customizable by both height and width to accommodate specific product lines. Additionally, you can choose wood species and stain, as well as powder coat color for the metal.



STORE CONFIGURATIONS



Our gondolas, endcaps, and modular wall units are a great way to start organizing your store. They come in a variety of 4-foot wide sections, with 5, 6, 7, or 8-foot heights, as well as 24, 34, 36, or 42-inch endcap widths. Our modular units are constructed in standard sizes so each unit is compatible with shelves, peg hooks, face out arms, or accessories. Put as many 4-foot sections together as you desire, making long aisles or small modular pods. Finish them with a well-organized endcap and you will be on your way to stocking shelves in no time!

We want the fixtures to be the perfect fit for your store. Customize with wooden trim and decks, your preferred size, and choose the color you would like them to be painted.

The modular wall units paired with our gondolas allow you to merchandise your products in any configuration that works for you, while also providing a standard wall size that allows you to interchange shelves, racks, and accessories between units. Our system allows you total freedom in designing your retail space.

Our Capabilities

Quality Wood & Metal Designs is a family-owned generational company that prides itself on Midwest ethics. We invest deeply in our relationships with our customers and always aim to exceed expectations both on time and budget.

- CREATIVE INNOVATION
- EXCEPTIONAL SERVICE
- COMMITMENT TO QUALITY
- CUSTOM-MADE PRODUCTS
- EXPERT KNOWLEDGE
- DESIGN & MANUFACTURING
- DEPENDABILITY
- INDUSTRY-LEADING SOLUTIONS

Introducing Our Experts



CHET CARLSON
Sales Representative
chet@qualitywooddesigns.com
605-996-7855



DANIELLE DEKUIF
Sales Manager & Floorplanning Specialist
danielle@qualitywooddesigns.com
605-770-2812

Our Promise

LONGEVITY

We take great pride in the quality and craftsmanship of our work, and we are known for overbuilding our fixtures. In fact, we offer a 10-year manufacturer's guarantee on all our retail fixtures as long as they have been used for their designed and engineered purpose and intent. A manufacturer's warranty like ours is unheard of in this industry.

WANT TO KNOW MORE?

Whether you're remodeling, relocating, or constructing, the process for a robust fixture plan remains consistent.

Get in touch with us to collaborate on crafting the perfect layout for your business.

- SALES@QUALITYWOODDESIGNS.COM
- 605-996-7855

Thanks for
stopping by!



QUALITYWOODDESIGNS.COM

SALES@QUALITYWOODDESIGNS.COM

605-996-7855