



**FIREARM LOCKING SYSTEMS
BY QUALITY WOOD & METAL DESIGNS**

PRODUCT GUIDE



**An innovative residential product that provides a safe
and secure way to display firearms at home**

qualitywooddesigns.com

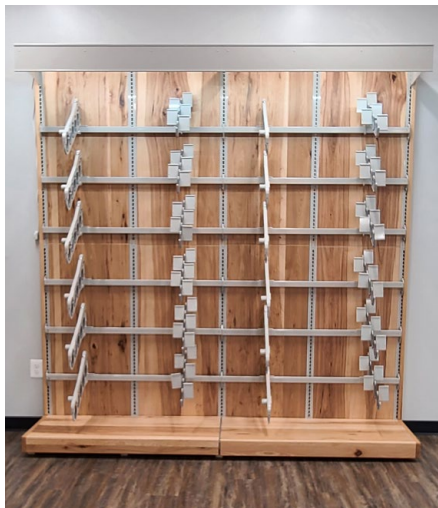
Home Guardian provides the same innovative and secure ways to display firearms, but for you and your customers' homes. Aside from securing your firearms, the Home Guardian system also protects the condition of your firearms.

Ask us how to sell this in your retail or purchase it for your home use.





Slat Wall Inserts



Furniture Finished Wood Panels

MODULAR WALL - What would be better than outfitting your entire perimeter wall in merchandisable space? Our QWD Mod Wall system is the base of our modular system allowing all Gun Warden products to mount interchangeably as well as shelving and pegs and slat wall accessories, allowing this system to grow with your business.

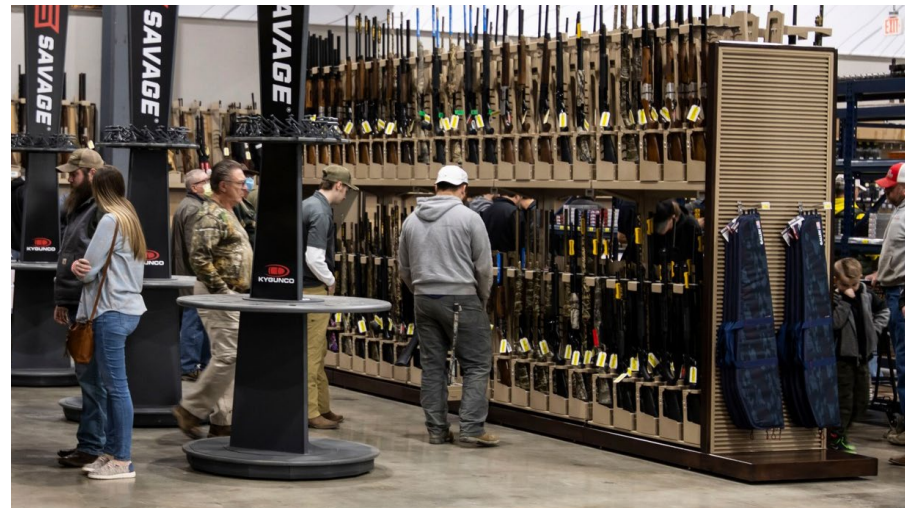
- The sections are 4ft on center slotted uprights with backer panels
- Available heights: 6ft and 8ft
- Backer options available: decorative wood panels, metal backers, or 1" aluminum slat wall.
- System features:
 - Heavy-duty uprights
 - Steel base with leveler feet
 - Universal mounting system to always find at least 6 anchor points.

This wall system is a class act whether your store aesthetic is metal urban tactical, timeless wood furniture library, or your custom hybrid package.

Metal Backers



Decorative Wood Panel



8ft Tall Gondola without Backers

GONDOLAS - Our gondola system is the most versatile retail fixture in our catalog. Available in 5ft, 6ft, 7ft, and 8ft heights, our 4ft on-center sections bolt together endlessly to fit any length. The system is supported by two merchandisable endcaps. This fixture can handle our Gun Warden System, Ammo Shelves, and can sport Slat Wall for all your other merchandising needs!

NEW! TURRET - A classic display with the strength of the Gun Warden. With the option of a manual or motorized rotation and with or without glass, you can optimize your floor plan and get your inventory in front of your customers securely. Turrets also feature our fully adjustable butt rest for all gun shapes and are equipped for AR cable kits.

Gun Warden Turret - 18 Long Gun Capacity - with merchandising POP sign holders





5-Gun Horizontal Locking Arms over Vertical Sliders with LED Lighthoods on Lozier

HORIZONTAL LOCKING ARMS - The Gun Warden product that started it all, our Horizontal Locking Arms. This display provides a waterfall effect for great visualization of each firearm as well as integrated sign holders for a neat and clean way to present pricing and features. The system adjusts both the jaw and barrel rest side to side to fit every gun, every time. When unlocked the jaw swings up and out of the way to protect your firearms from damage. Our 4-Gun Arm will fit inside our Glass Case Surround and is a great way to feature your high-end guns and pair them with our volume Vertical Sliders. Available in both 4-Gun and 5-Gun capacities. Ask about our AR Cable Kits.

Finish packages for all of our displays and fixtures can be found on our website:
www.qualitywooddesigns.com/finish-packages

5-Gun Horizontal Locking Arms with LED Lighthoods on QWD Modular Wall with Slat Wall



Gun Warden Locker - 8-Gun Capacity on Lozier

LOCKER - The NEW Gun Warden Locker is a simple, secure solution for home or retail, holding 8-Guns every 4ft section. The barrel rest is closed to prevent any leverage to pull the fixture off the wall and the butt rests adjust for each gun giving you the perfect fit, every time.

VERTICAL SLIDERS - This staple of the Gun Warden is hands down the highest volume per square foot product on the market allowing you to get up to 50 long guns in a 4ft wide by 22in deep footprint. The product slides out to pack in the inventory while allowing you to easily reach the gun in the back. Sleds are spaced to accommodate scopes and adjustable to fit any style of gun on each sled. Comes in both 4-Gun and 5-Gun capacities. Ask about our AR Cable Kits.

STATIC VERTICALS - This is a play on the classic vertical display but it gives you a better view of each gun and added security. This pairs perfectly with Undercase Storage or shelving to keep your add-on sales, accessories, and ammo within reach.

4-Gun Non-Locking Sliders on QWD Mod. Wall



5-Gun Vertical Sliders over Shelves

4-Gun Locking Static Verticals on Lozier





Pistol Wardens over Undercase Storage



Pistol Wardens on QWD Mod. Wall



PISTOL WARDEN - Feature a solid steel bar that runs through the trigger, making it impossible to break without damaging the firearm. Since our Gun Warden products are all designed with retailers in mind, we have made them easy to use and operate. Armature wire is used to hold the gun in place allowing you to lock and unlock the gun. The Pistol Warden also adjusts side-to-side allowing up to 5 guns to fit comfortably across the 4ft bar. They also come with sign holders to keep the wall clean and neat. Pair the Pistol Warden with a Glass Case Display, Undercase Storage, or Shelves to complete the display. Add a Long Gun Barrel Rest for single-depth displays. Ask about our AR Cable Kits. Complete the display by pairing the Pistol Warden with a Glass Case Surround, Undercase Storage, or Shelves.





Ammo Case with Under-Shelf Lighting



Optics with Under-Shelf Lighting



Metal Security Showcase



Metal Security Showcase - Steel Doors

GLASS CASE SURROUND - This is the most versatile locking case on the market! It allows for great sight lines to your products and can be used with shelving, pegs, or our Gun Warden 4-Gun Horizontal Locking Arms or our Pistol Wardens. With integrated lighting for the Gun Displays and additional Under-Shelf Lighting Kits available for the shelves, your products will be secure, highlighted, and visible to your customers.

SHOWCASES - If you are looking for a workhorse fixture in your shop, look no further! With 4ft and 5ft lengths, this counter height display can hold anything from handguns to optics to knives. All cases come with LED Lighting and 2 layers of tempered glass shelves in 10" and 12" depths. Overall case dimensions are 48" or 60" wide x 38" tall x 21" deep. Outfitted with interlocking steel bypassing doors and a fortified lock shroud, this fortress protects your most valuable products.

4-Gun Horizontal Locking Arms



Pistol Wardens



4ft Stainless Steel Top Workstation



Wood Showcase



Metal High-Security Case - What sets our Metal Showcase apart is our 1/4" tempered glass with security film, 1/4" polycarbonate top and front, and welded frame providing a smash-resistant case. For convenience, we provide a removable toe-kick so you can hardwire all case lights together.

Wood Medium Security Case - Utilizes 1/4" tempered glass with security film and features solid wood and 3/4" plywood construction. It not only looks good and remains sturdy for many years of use.



Conversation Table with Slat Wall



Metal Adjustable Pallet Wrap

CONVERSATION TABLE - For the new style of Gun Shop the Conversation Table allows you to have your customers interact with the firearms on the wall. When they are ready to see a gun you can unlock it from the Gun Warden System and stand shoulder to shoulder with your customer and go over the gun together.

METAL PALLET WRAP - Instead of taking heavy ammo off a shipping pallet, use our adjustable metal pallet wrap to create an eye-catching display. Save labor hours and shelving space with bulk-stacks.

WOOD BULK PALLET - The Wood Ammo Pallet is a dream come true! Finally a pallet fixture you can move confidently with a pallet jack, with the accessory table at the top. This is the perfect shot shell fixture and it also works great for footwear, coolers, etc.

GONDOLA - The cornerstone of a retail shop is the gondola system. Our QWD Gondola is built with the outdoor industry in mind, with heavy-duty ammo shelves, aluminum extruded slat wall and a multitude of accessories. This is a retail-must have!

Wood Ammo Pallet



Gondola with Slat Wall and Ammo Shelves



T-Shirt Tower



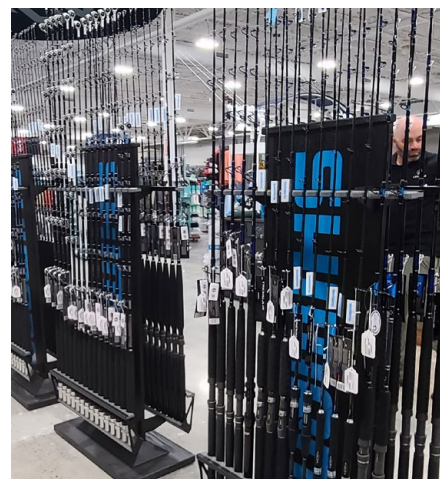
Nesting Tables



Mod Wall with Slat Wall for Pegs



Gondo Tower



Rod Racks



QWD Modular 2-way

**DON'T KNOW WHERE TO START,
JUST GIVE US A CALL AND WE WILL HELP!**

**WANT TO START FORMULATING A PLAN? BELOW ARE
SOME QUESTIONS TO JUMPSTART YOUR PLANNING**

Whether you want to Remodel your current store, move to a new building or build your own, the steps of getting a solid fixture plan are the same. Check out all of the options in this booklet and answer the few questions below. When you are ready, give us a call and we can work through a plan together to come up with a sketch of your ideal layout for your business. Some items that are good to know for the call:

TELL US A BIT ABOUT YOUR SHOP:

- Ceiling Height?
- Where would you like to merchandise your products? Please include wall lengths. Locations of doorways, windows, columns, etc. (a napkin sketch or architectural drawing would work)
- Is anything else unique about your space that would affect the layout?

TELL US ABOUT YOUR CURRENT DISPLAYS:

- Is your store a blank slate or would you like to start fresh?
- The Gun Warden works with most existing gondola and wall systems. Do you have a slotted upright system in place, if so what brand?
- How many firearms and other products are you looking to secure?

TELL US ABOUT YOUR MERCHANDISING GOALS AND STYLE:

- How many firearms and other products are you looking to display and secure?
- How do you want to sell? With a traditional gun counter or a more open boutique style?



**FIREARM LOCKING SYSTEMS
BY QUALITY WOOD & METAL DESIGNS**